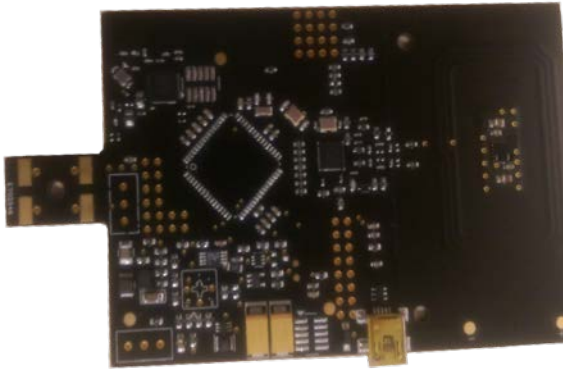


EFT-WACL

Wireless Autonomous RFID/NFC reader

REF : 1510-01



DESCRIPTION

The EFT-WACL is a wireless autonomous RFID/NFC reader board for building a wide range of contactless applications, without power consumption constraints.

This reader is powered by a battery coupled to a photovoltaic cell. Data transmissions are done by BLE (Bluetooth Lower Energy), SigFox or LoRa wireless network.

With the EFT-WACL, Eff'Innov Technologies offers a cutting-edge product for applications demanding autonomous, connected and flexible contactless readers.



KEY FEATURES

- Integrated Antenna
- LEDs and buzzer
- BLE or SigFox communication
- LoRa communication (available soon)
- Powered by PV cell
- Onboard battery for better autonomy
- Bootloader for easy firmware upload
- Proximity operating distance up to 80 mm
- Supports popular tag technologies
 - ISO/IEC-14443/A
 - ISO/IEC 14443/B
 - MIFARE (Mini, 1K, 4K, Ultralight)
 - MIFARE Desfire
 - ISO/IEC 15693
 - I-CODE

KEY BENEFITS

- Suitable for isolated equipment
- BLE, SigFox or LoRa interface
- Easy fix-and-use
- Highly flexible and customizable for specific requirements



TARGETED APPLICATIONS

- Industrial, services or residential facilities access control
- Operating assets remotely (sharing/tracking goods, vehicles or services)
- Infrastructure-based identification systems
- Vehicle fleet management

Contact

For more information, please contact sales@effinnov.com

www.effinnov.com

EFF'INNOV TECHNOLOGIES

2 Esplanade Anton Philips - Campus EffiScience - 14460 COLOMBELLES - France
Tel : +33 (0)2 3134 1400 / contact@effinnov.com

EFT-WACL R

Wireless Autonomous RFID/NFC reader

REF : 1510-01

Technical data are subject to change without notice

General Specifications	Min	Typ	Max	Unit
Operating Temperature	-20	25	65	°C
Storage Temperature	-20	25	65	°C

Electrical Specifications	Min	Typ	Max	Unit
Supply current / Standby mode	--	500	700	µA
Supply current / Active mode	--	70	100	mA
Average supply current	--	2	--	mA

Interface	
BLE (Bluetooth Low Energy)	Up to 2Mbps / 10m
SigFox	Up to 100bps / 15 km
LoRa	Up to 1200bps / 15 km

RF Specifications	
Frequency	13.56 MHz
Reading distance	Up to 80mm
Antenna	Integrated
Protocol	ISO14443A, ISO14443B, ISO15693, ICode SLI

RF Specifications			
Pin	Interface	Pin	Interface
1	RXD	5	NC
2	TXD	6	NC
3	NC	7	VCC
4	NC	8	GND

Mechanical Dimensions	Width	Length	Height
	53 mm	85 mm	5.7 mm

Ordering Information

Type Number	Description
EFT-WACL R-S-PV	Wireless autonomous contactless reader, SigFox OEM version
EFT-WACL R-B-PV	Wireless autonomous contactless reader, BLE OEM version
EFT-WACL R-L-PV	Wireless autonomous contactless reader, LoRa OEM version



www.effinnov.com

EFF'INNOV TECHNOLOGIES
2 Esplanade Anton Philips - Campus EffiScience - 14460 COLOMBELLES - France
Tel : +33 (0)2 3134 1400 / contact@effinnov.com

EFT-WACLR

Wireless Autonomous RFID/NFC reader

REF : 1510-01

Reproduction is prohibited without the consent of EFF'INNOV TECHNOLOGIES. All information contained in this document is provided "AS IS". EFF'INNOV TECHNOLOGIES assumes no responsibility for its accuracy and/or completeness. In no event will EFF'INNOV TECHNOLOGIES be liable for damages arising directly or indirectly from any use of the information contained in this document.



www.effinnov.com

EFF'INNOV TECHNOLOGIES
2 Esplanade Anton Philips - Campus EffiScience – 14460 COLOMBELLES – France
Tel : +33 (0)2 3134 1400 / contact@effinnov.com